

Paragon 8000 Series Timers

Time Initiated / Time Termination

Timers are adjustable from one to six cycles per day. A minimum of four hours is required between successive operations. Defrost duration ranges from 4 to 110 minutes and is easily adjustable. Contact rating: 40 amps resistive/pole

Part #	Volt	Switch
8041-00	120	2 NC / 1 NO
8041-20	208/240	2 NC / 1 NO

8045-00	120	SPDT
8045-20	208/240	SPDT



Time Initiated / Temperature or Pressure Termination

Backup mechanical defrost termination protects against sensor malfunction. 1 to 6 cycles per day. A minimum of 4 hours between successive defrost cycles. Adjustable from 4 to 110 minutes, in 2 minute increments.

Part #	Volt	Switch
8141-00	120	2 NC / 1 NO
8141-20	208/240	2 NC / 1 NO

8145-00	120	SPDT
8145-20	208/240	SPDT



Paragon Replacement Parts

M1129	Motor – 115V	Series	8040-00 8140-00
M1130	Motor – 240V	Series	8040-20 8140-20
X2772	Trippers		

Paragon Universal Defrost Timers

Wires directly to 120V AC, 208V AC or 230V AC power sources without jumpers or switches

Easy programming, easy set-up, set defrost start and defrost end
Initiate 15 minute manual defrost

100 hours of power loss protection for both time and defrost schedule

- Display shows defrost start time and duration

Part #	
9145-00	Time initiate/Temperature-Pressure terminate
9045-00	Time initiate/Time terminate



Grasslin Multi-Voltage Universal Replacement

1 Unit covers all voltages and all defrost methods.
Fits competitive enclosures.

Replaces 8000 series Paragon
6000 series Precision

Part #	Volt	
DTMV 40	120/208/240	40 Amp. 2 HP Rating



Grasslin 24 hour auto-voltage timer

The GM40AV auto-voltage time switch is a universal, electromechanical clock which can automatically detect the voltage input without the use of dip switch or selector pins. The clock can operate at any voltage between 120 and 277 VAC. The clock understands the corresponding input voltage automatically. No need to worry any longer if the correct voltage was set before wiring.

Features a DPDT switching configuration (two normally open and two normally closed contacts).

The manual override switch allows for ON/OFF/AUTO functionality.

Part #
GM40



Universal Replacement Electronic Adjustable Timer

Replaces most defrost timers in domestic and commercial refrigerators and freezers

Adjustable defrost 4 to 12 hours

Adjustable defrost time 10 to 35 min.

Part #			
EDT 10	115	1/3 HP	10 AMP
EDT 20	208/240	1/3 HP	5 AMP
EDT 21	208/240	3/4 HP	20 AMP



Beverage Air Timers

Part #	Voltage
502-143A	120

Special order- Call with Model # and Serial #
for all Beverage Air Parts.



**Bohn Drain Fitting
5/8 MPT**



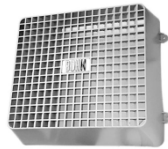
**Part #
66708001**

**Bohn Drain Fitting
3/4 MPT**



**Part #
92864003**

**Bohn Fan Guard
13" 14 1/2"**



**Part #
4340X**

Bohn Fan Guard

**Part #
5068E 18 1/4" Diam.
5072E 9 3/8" Diam
5073E 16 3/8" Diam.**



Bohn Motor Bracket



**Part #
23104101**

28.56

Bohn Motor Bracket



**Part #
5064E**

Beverage Air Parts

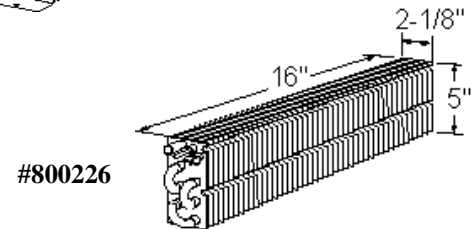
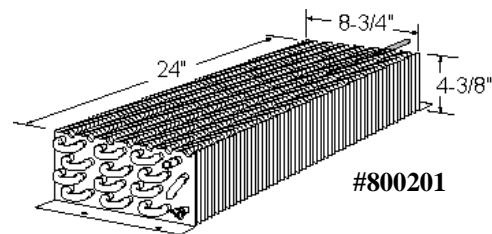
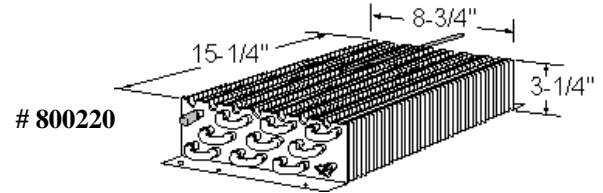
**Call with Model and Serial Number for all
Beverage-Air parts**



True Parts

**Call with Model and Serial numbers for all
your True parts.**

Evaporators:



**Many other sizes available. Call for price and
availability.**

**For all O.E.M. parts – call with Model &
Serial #
Many more suppliers are available other than
listed.**

**Anthony
Ardco
Bally
Beverage Air
Delfield
Federal
Foster
Glenco
McCray
McCalls
Jordon/Fogel
Kelvinator
Kolpak
Larkin
Masterbilt
McQuay
Nor-Lake**

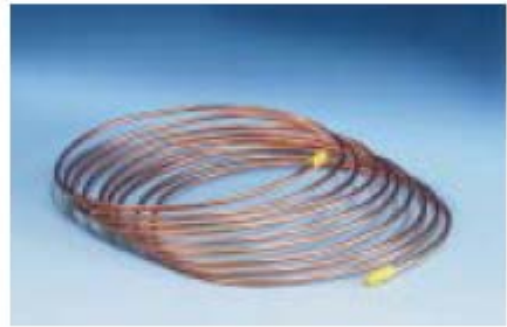
**Nor-Lake
Peerless
Perlick
Randell
Russell
Schaefer
Silver King
Sub-Zero
Tafco
Traulsen
True
Tyler
Universal/Nolin
Victory
Vulcan/Hart
Zero Zone**

Capillary Tubing

Fits any domestic and commercial refrigerator or room a/c from

1/8 HP to 5 HP.

Old Part#	New Part #	Length	Description
EW			
	BC26X16	16 feet	.026 ID X .071 OD
BC5	BC28X10	10 feet	.028 ID X .071 OD
BC1	BC31X10	10 feet	.031 ID X .081 OD
	BC36X12	12 feet	.036 ID X .086 OD
BC2	BC40X12	12 feet	.040 ID X .093 OD
	BC42X12	12 feet	.042 ID X .093 OD
	BC44X12	12 feet	.044 ID X .093 OD
	BC46X12	12 feet	.046 ID X .093 OD
	BC49X11	12 feet	.049 ID X .093 OD
	BC50X11	11 feet	.050 ID X .093 OD
BC3	BC52X12	12 feet	.052 ID X .093 OD
	BC54X11	11 feet	.054 ID X .106 OD
	BC55X11	11 feet	.055 ID X .112 OD
	BC59X10	10 feet	.059 ID X .112 OD
BC4	BC64X12	12 feet	.064 ID X .125 OD
	BC70X12	12 feet	.070 ID X .125 OD
	BC75X9	9 feet	.075 ID X .125 OD
	BC80X10	10 feet	.080 ID X .145 OD
	BC85X9	9 feet	.085 ID X .145 OD
	BC90X7	7 feet	.090 ID X .145 OD



Capillary Cutter

60195 Cleanly cut capillary tubing without flattening or constricting tubing.



Molecular Spun Copper Driers

Compatible with CFC, HCFC and HFC gases. Can be used in commercial and domestic refrigerators, freezers and A/C units. 1/4" In and Out w/Acc.Ftg.

Part # SUD 111



Mars Solid State Timers

Part #

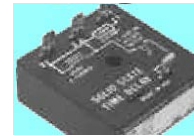
32091 Delay on make -
Adj. 6 sec...8min.
Input volt: 19-288

Part #

32393 Off/delay Range: 2 min.. fixed
Volt: 19-288

Part #

32395



Drain Heaters

Designed for continuous use to protect drains against ice build up which leads to clogging.
Applications: Condensate drain pans, tubes and troughs.

Flexible Braided Aluminum Drain Heaters

Part #	Volt	Watts	Size
SH201	115	15	18"
SH202	115	45	29"
SH203	115	55	44"

Metal Braid – 18" leads

SH504	120	25	21"
SH505	240	25	21"



Door Heaters- Mullion and Dew Point

Prevents moisture on glass display doors. Eliminates frost build up on doors and cabinet fronts. Use on commercial and domestic refrigerators and freezers.

Part #	Volts	Watts	Size
SH281	120	3	36 1/2'
SH282	120	3	18'
SH283	220	3	36'



Condensate Drain Pans

Cost effective replacement drain for most commercial refrigerators and freezers.
PTC control supplies only required heat to evaporate water. Self regulating.

Part #

30-0S 38 oz/120Volt 8 oz/hr 10"x4"x2 7/8"

75 75oz/120V 14 oz/hr 10"x9"x2 3/4"



Temperature alarm

Single Set Point Temperature Alarm

A reliable, inexpensive alarm for refrigerators and freezers.

Just flip a switch to activate alarm on a rise or fall in temperature.

- Adjustable range from -10°F to +80°F (-25°C to +30°C)
- 90 db audible alarm

TA-2



Custom formed tubular heaters:

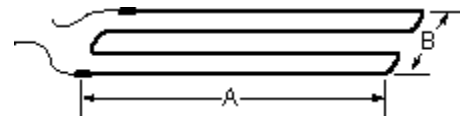
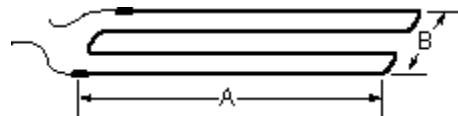
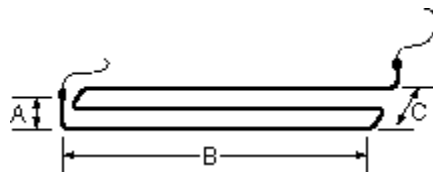
Heaters designed to operate on 230 volt current can be connected to 115volt current, but their effective wattage is reduced to 1/4 of the rated wattage.. Heaters designed to work on 115volt current should not be connected directly to 230 volt current.

1/4" Diameter incoloy sheath tubular heaters.

Lengths in 24" to 240"

Wattages from 150 to 3500.

Sample configurations:



Call for more information on custom heaters,
Or OEM heaters.

VAPOR TENSION THERMOMETER

- Remote reading
- Recessed flange-mount
- -40 - 60° (-40 - 15°C)
- 2°F/C per division
- 2" Dial with 3" mounting flange
- 48" Nickel plated, rear-mounted capillary
- Color-coded scales
- NSF listed
- One year limited warranty

Part #: RF60A



VAPOR TENSION THERMOMETER

- Remote reading
- Hanger mount
- -40 to 60°F (-40 to 15°C)
- 2°F/C per division
- 2" Dial with hanger strap
- 48" Nickel plated capillary with bottom connection
- Color-coded scales
- Easy pointer calibration
- NSF listed
- One year limited warranty

Part #: RH60



REFRIGERATION / FREEZER THERMOMETER

- Functions
- -20 to 80°F (-30 to 30°C)
 - 2°F/1°C per division
 - Hangs or stands
 - Stainless steel frame
 - One year limited warranty
- Part #: RFT2A



REFRIGERATOR / FREEZER THERMOMETER

- Functions
- -40 to 80°F (-40 to 27°C)
 - Large 5" x 1 1/4" scale plate
 - Red spirit-filled (contains no mercury)
 - Hangs or stands
 - NSF listed
 - One year limited warranty

Part #: FG80



VAPOR RETENTION THERMOMETER

Glass Spirit 2° -40° to 120°F

Part #: G120



POCKET DIAL THERMOMETERS

2° -40° a +160°F 5"

Part # T160



Water proof Built-in magnetic mount

- Features include
- -58° to 572°F
 - MIN/MAX
 - Data Hold
 - Auto power off

Part # PDT550

